



*The Aldridge Plan, Home 365*



South on Main's *Final* Luxury Home  
by John Wieland, Founder & CEO, The JW Collection

3,512 Sq. Ft. | 4 BD, 4.5 BA

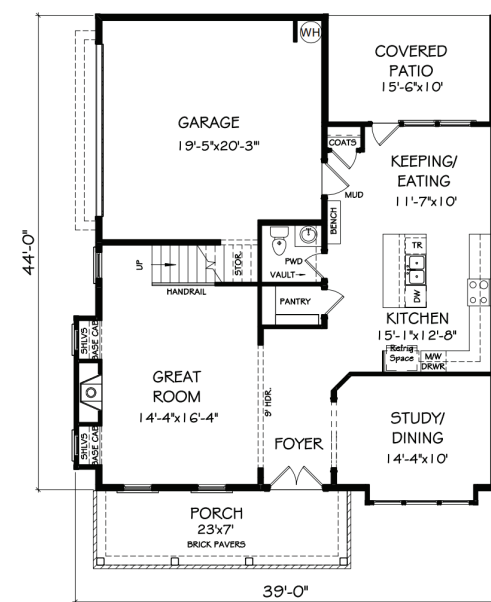


Don't miss your opportunity to own the final home at South on Main! Thoughtfully designed across three levels, this paired residence lives like a single-family home and features a beautiful covered front porch, fenced front yard, spacious covered patio, luxury primary suite with a spa-inspired bath and luxury finishes throughout.

The main level showcases a chef's kitchen with JW Collection's signature cabinetry to the ceiling, an oversized island and high-end appliance package. The third floor offers a bonus/media room and plentiful storage. Located just steps from vibrant downtown Woodstock and South on Main's wide array of upscale amenities, these final Barrington townhomes offer an unmatched blend of luxury, space and walkable living.



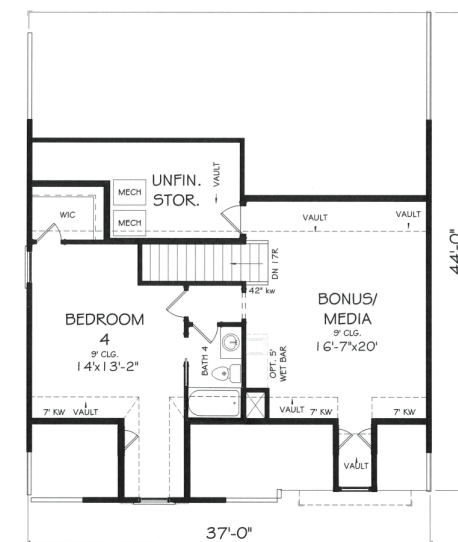
3,512 Sq. Ft. | 4 BD, 4.5 BA



First Floor



Second Floor



Third Floor

*The SHED at South on Main*



THE SHED

299



SOUTH ON MAIN  
9200 MAIN STREET  
WOODSTOCK, GA 30188  
770-970-0200  
SOUTHONMAINWOODSTOCK.COM

SALES BY JW COLLECTION BROKERS, LLC. SUBJECT TO CHANGES, ERRORS & OMISSIONS. EQUAL HOUSING OPPORTUNITY. 03-2026.